

# Investment Report

For the Year 2023

Deploying the  
force for good  
so all can thrive.



United Way  
of the Plains



# Dear friends,

Hidden amidst the hustle and bustle of daily life are our neighbors who face life's toughest challenges: Working parents, wrestling with their finances to cover the basics each month. A student, struggling to complete their homework when the words on the page don't make sense. A teen, who feels lost and alone, uncertain where to turn. A single mom, facing eviction with nowhere to go.

At United Way of the Plains, we are driven by one mission: To help our neighbors thrive.

As we step into our second century of service, we remain steadfast in our commitment to connect people to possibility and create pathways to opportunity for all. We cultivate innovative solutions to complex social issues, invest in the local nonprofit ecosystem to address the most pressing needs and provide direct services to fill the gaps in the social services landscape. Where there is a need, there is your United Way.

Countless individuals make this work possible – volunteers, contributors, charitable partners, government entities, organized labor and those with lived experience. Together, we are an army of game changers and problem solvers. Fueled by passion and determination, we are changing trajectories and outcomes for people across our region.

The momentum of our collective efforts is undeniable. This movement grows stronger with each passing day. Young learners are gaining joy and confidence in their education. Families are achieving financial stability, once thought out of reach. Those experiencing homelessness are finding a fresh start.

Together, we create a ripple effect that will impact generations to come.

Together, we find a better way forward.

**Together, we are a force for good.**



*Peter F. Nájera*

Peter F. Nájera  
President & CEO  
United Way of the Plains

# Contents

Investing for Impact **2**

---

Nonprofit Investment Streams **3**

---

Force for Good: Charitable Partners **4**

---

Programs that Add Value:

Give Items of Value Warehouse **6**

Free Tax Prep **8**

Dolly Parton's Imagination Library **10**

Coalition to End Homelessness **12**

211 Resource Navigation Center **14**

---

In Appreciation **16**

We are proud to partner with many organizations committed to a future where every person can rise to their potential. Special thanks to these organizations and their employees for leading the way.



**Textron Aviation**



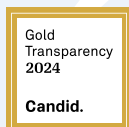
**Spirit AeroSystems**



**INTRUST Bank**

# Our Mission

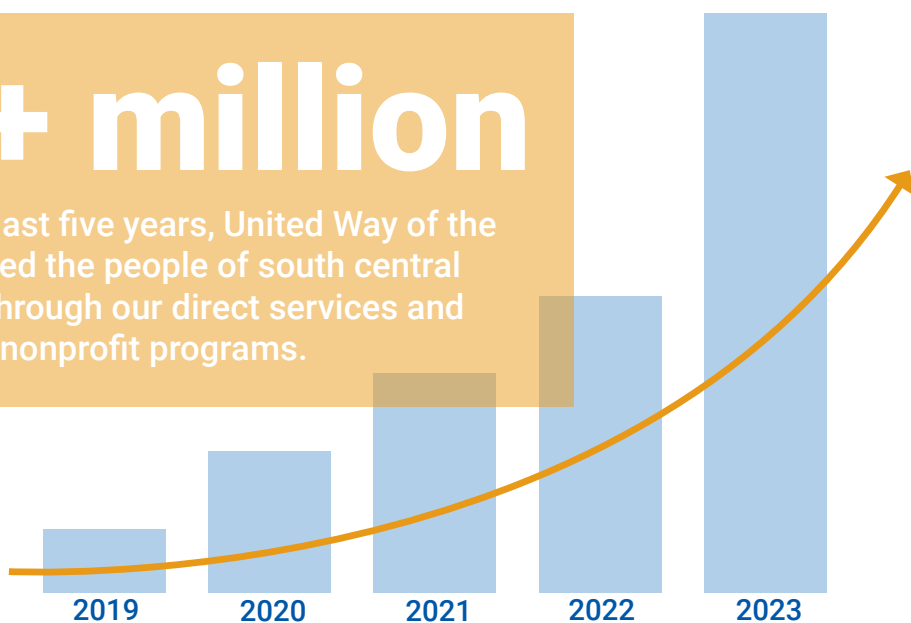
United Way of the Plains is a nonprofit and for-impact organization that focuses on health, education, financial stability and basic needs—the building blocks for a good quality of life and a strong community. Together, we improve lives by harnessing the caring power of our community to advance the common good in south central Kansas.



# Investing Impact

**2.5+ million**

times over the last five years, United Way of the Plains has helped the people of south central Kansas thrive through our direct services and investments in nonprofit programs.



## Every dollar donated becomes \$2.37 worth of impact.

When you give to United Way, we multiply your gift by serving as policy experts, creating efficiencies, leveraging resources and building relationships across all business sectors to drive impact. In addition to operating programs that add value and meet the community's most pressing needs, we also fund charitable programs.



# for



**“This funding allows our young people to really think about their future and their goals.”**

– Alexandria Ware, founder of Culture Creations

Culture Creations helps youth transition out of foster care and into adulthood. They were last year’s Impact on the Plains first-place recipient and People’s Choice Award winner.

**Because of you, \$5,611,889 was invested to advance the common good through 77 charitable programs at 68 nonprofits last year.**

Each fall, the fundraising campaign captures our community’s collective efforts to bring our neighbors help and hope. Funds raised support three investment opportunities that drive impact in our focus areas of health, education, financial stability and basic needs. *Recipients are summarized on the next page.*

**Opportunity on the Plains** is the largest, annual investment program that helps meet the most pressing needs in our community. Thanks to the caring power of our community, \$5.4 million was invested in 73 programs last year.

**Promise on the Plains** invests in Wichita-area nonprofits that provide opportunities for everyone, everywhere to thrive. Grants totaling \$100,000 were awarded to 15 nonprofits last year to help close gaps and disparities while building organizational capacity.

**Impact on the Plains** is a social innovation competition, modeled after “Shark Tank,” that promotes an entrepreneurial ethos in the nonprofit ecosystem to generate innovative solutions for complex social issues. \$105,000 was invested in four nonprofits (*pictured above*).

# Force for

With your support, United Way is creating a powerful social movement so everyone has a pathway to opportunity. **Together, we are a force for good.**

Symbols after the program and agency indicate the funding stream:

- ▲ Opportunity on the Plains
- Impact on the Plains
- ◆ Promise on the Plains
- United Way of the Plains Direct Community Services

## HEALTH

- Cana Counseling Services, **Catholic Charities** ▲
- CARES: Compassionate Advancement of Resiliency, Equity, and Support, **Central Plains Health Care Partnership** ▲
- Clinical Team Lead, **ICT Street Team** ▲
- Community Connections, **International Rescue Committee** ▲
- Delta Dental Community Benefit Plan, **United Way of the Plains** ■
- Direct Client Services, **Cairn Health** ▲
- Direct Client Services, **Great Plains Diabetes** ▲
- Exercise & Wellness Therapy for People with Disabilities, **Cerebral Palsy Research Foundation of Kansas** ▲
- HealthBridge Initiative, **Medic All** ●
- Kidzcope, **Wichita Children's Home** ▲
- Mental Health Services for Victims of Sexual Assault, **Wichita Area Sexual Assault Center** ▲
- Outpatient Mental Health, **Kansas Children's Service League** ▲
- Project Access, **Central Plains Health Care Partnership** ▲
- Promoting Good Oral Hygiene Habits for Good Health, **GraceMed Health Clinic** ▲
- Removing Language Barrier to Health Care Access, **GraceMed Health Clinic** ▲
- RSVP of Sumner County, **Mental Health Association of South Central Kansas** ▲
- Sober Active Community, **The Phoenix** ▲
- SingleCare Prescription Discount Card, **United Way of the Plains** ■
- Strengthening Girls from Start to Finish, **Girls on the Run of Kansas** ▲
- Scholarships for Children & Adults with Disabilities, **Freedom Hooves Therapeutic Riding Center** ▲
- Transportation, **Cerebral Palsy Research Foundation of Kansas** ▲

- Vision Clinic, **Guadalupe Clinic** ▲
- Wheelchair Clinic & Assistive Technology Funding, **Cerebral Palsy Research Foundation of Kansas** ▲
- Wichita Student Dignity Project, **Simply Hygiene** ▲

## EDUCATION

- Aaron Joel Smith Youth Volunteer Scholarship, **United Way of the Plains** ■
- After-School and Summer Program, **Boys & Girls Clubs of South Central Kansas** ▲
- Boys 2 Men Program, **Mental Health Association of South Central Kansas** ▲
- Brotherhood and Sisterhood, **Rise Up for Youth** ▲
- Champions for Literacy, **United Way of the Plains** ■
- Childcare Center, **Aspire Academy** ●
- Community Based Mentoring, **Kansas Big Brothers Big Sisters Serving Sedgwick County** ▲
- Community Based Programming, **Girl Scouts of Kansas Heartland** ▲
- Dolly Parton's Imagination Library, **United Way of the Plains** ■
- Early Childhood Block Grant Collaborative, **United Way of the Plains** ■
- Early Childhood Connections, **Child Start** ▲
- Early Interventions for Infants and Toddlers, **Rainbows United** ▲
- Educational STEM & Little Aviators Program, **Kansas Aviation Museum** ▲
- Juniper Music, **Juniper Arts Academy** ▲
- Linking Students to Nature: Education Program, **Friends of the Great Plains Nature Center** ▲
- Mentorship Program, **Heroes Academy** ▲
- One-to-One Mentoring, **Kansas Big Brothers Big Sisters Serving Cowley County** ▲
- Pathways to Graduation and Career Success, **Jobs for America's Graduates - Kansas** ▲
- PandoKids, **The Pando Initiative** ▲
- Read to Succeed, **United Way of the Plains** ■

# Good

- Root the Power, **Destination Innovation** ▲
- Youth Employment Project, **Workforce Alliance of South Central Kansas** ▲

## FINANCIAL STABILITY

- Angel's Cowley County Outreach Center, **Angels in the Attic** ▲
- Bank On ICT Coalition, **United Way of the Plains** ■
- BeyondFoster, **Culture Creations** ●
- Bridges Out of Poverty, **Children First CEO Kansas** ▲
- Camp Destination Innovation, **Destination Innovation** ▲
- Career Sustainability, **Shepherd's Way** ▲
- Financial Wellness, **Elevate Cowley County** ▲
- Free Tax Prep Program, **United Way of the Plains** ■
- Fresh Hope, **His Helping Hands** ▲
- Hand Up to Work, **Goodwill Industries of Kansas** ▲
- Harvey County Circle of Hope, **Peace Connections** ▲
- Jump Start Career Readiness, **Breakthrough** ▲
- LegacyWorks, **Legacy Ministries** ▲
- Pathway to Homeownership, **Wichita Habitat for Humanity** ▲
- Seeds for Success, **Catholic Charities** ▲
- Stabilization Program, **Family Promise of Greater Wichita** ▲
- Workforce Skills & Support for Disadvantaged Women, **The Women's Network** ▲

## BASIC NEEDS

- Anti-Human Trafficking Prevention and Advocacy, **ICT SOS** ▲
- Assessment & Stabilization Center, **The Salvation Army South Central Area Command** ▲
- Coalition to End Homelessness in Wichita/Sedgwick County, **led by United Way of the Plains** ■
- Community Food Ministry, **United Methodist Open Door** ▲
- Court Appointed Special Advocates, **CASA of Sedgwick County** ▲
- Emergency Services, **Family Promise of Greater Wichita** ▲
- Emergency Social Services, **The Salvation Army South Central Area Command** ▲
- Emergency Winter Shelter, **HumanKind** ▲
- Food Assistance, **Augusta Community Caring Center** ▲

- Harbor House, **Catholic Charities** ▲
- Homeless Prevention, **Center of Hope** ▲
- Homeless Resource Center, **United Methodist Open Door** ▲
- Journey Home, **Children First CEO Kansas** ●
- Kinship Navigator, **Kansas Children's Service League** ▲
- Meals on Wheels, **Senior Services of Wichita** ▲
- Meeting Basic Needs & Increasing Financial Stability, **Dear Neighbor Ministries** ▲
- Our Daily Bread Food Pantry, **Catholic Charities** ▲
- Residential Emergency Shelter, **Wichita Children's Home** ▲
- St. Anthony Family Shelter, **Catholic Charities** ▲
- Stability and Resources for Domestic Violence Victims, **StepStone** ▲
- Support for Victims of Sexual Assault, **Wichita Area Sexual Assault Center** ▲
- The Inn, powered by HumanKind, **HumanKind** ▲
- Turning Point Housing Program, **Breakthrough** ▲
- Vets Ride Free, **United Way of the Plains** ■
- Youth Anti-Homeless Program, **Wichita Children's Home** ▲

## UNITED WAY OF THE PLAINS DIRECT COMMUNITY SERVICES

- 211 Resource Navigation Center ■
- Give Items of Value Warehouse ■
- Promise on the Plains ◆
  - **Bridges Over Fences Project**
  - **Common Ground Producers and Growers**
  - **Culture Creations**
  - **Destination Innovation**
  - **Equity Initiative**
  - **Heroes Academy**
  - **Hope Community Development Corporation**
  - **ICT Launchpad**
  - **Pound the Rock Project**
  - **Salud + Bienstar**
  - **The Kansas African American Museum**
  - **Untamed Athletes**
  - **Urban League of Kansas**
  - **Wichita Birth Justice Society**
  - **Youth Educational Empowerment Program**
- Volunteer Center ■

# Give Items Value

**Because of you, United Way invested \$228,950 to leverage a record-breaking \$3.04 million in donated goods.**

United Way's Give Items of Value (GIV) Warehouse is a bridge between companies with excess inventory and nonprofits with limited budgets. With the help of volunteers, who process donated items, nonprofits can access goods for free to support their mission.



*New York City-based Mutual of America Financial Group recognized GIV as a recipient of their prestigious Community Partnership Award for our innovative and impactful approach to meeting our community needs. Pictured left: Pete Najera, President and CEO, United Way of the Plains; Lisa Loughry, Chair, Mutual of America Foundation; Brian Severin, Senior Executive Vice President and CMO, Mutual of America Financial Group; and John R. Greed, Chairman, President and CEO, Mutual of America Financial Group.*

**108**

national retailers and local companies donated products to GIV

**1,702**

hours 437 volunteers inventoried, sorted and stocked products

**\$54,**

value of volunteer hours and overhead



# ns of



**“We want to make sure we’re good stewards of donor dollars. Saving over \$50,000 in furniture through GIV allowed us to reinvest that in education programs, outreach, care and support. It’s just putting that money back into the community.”**

**– Fe Vorderlandwehr, Executive Director,  
Alzheimer’s Association Central and  
Western Kansas Chapter**

**108**

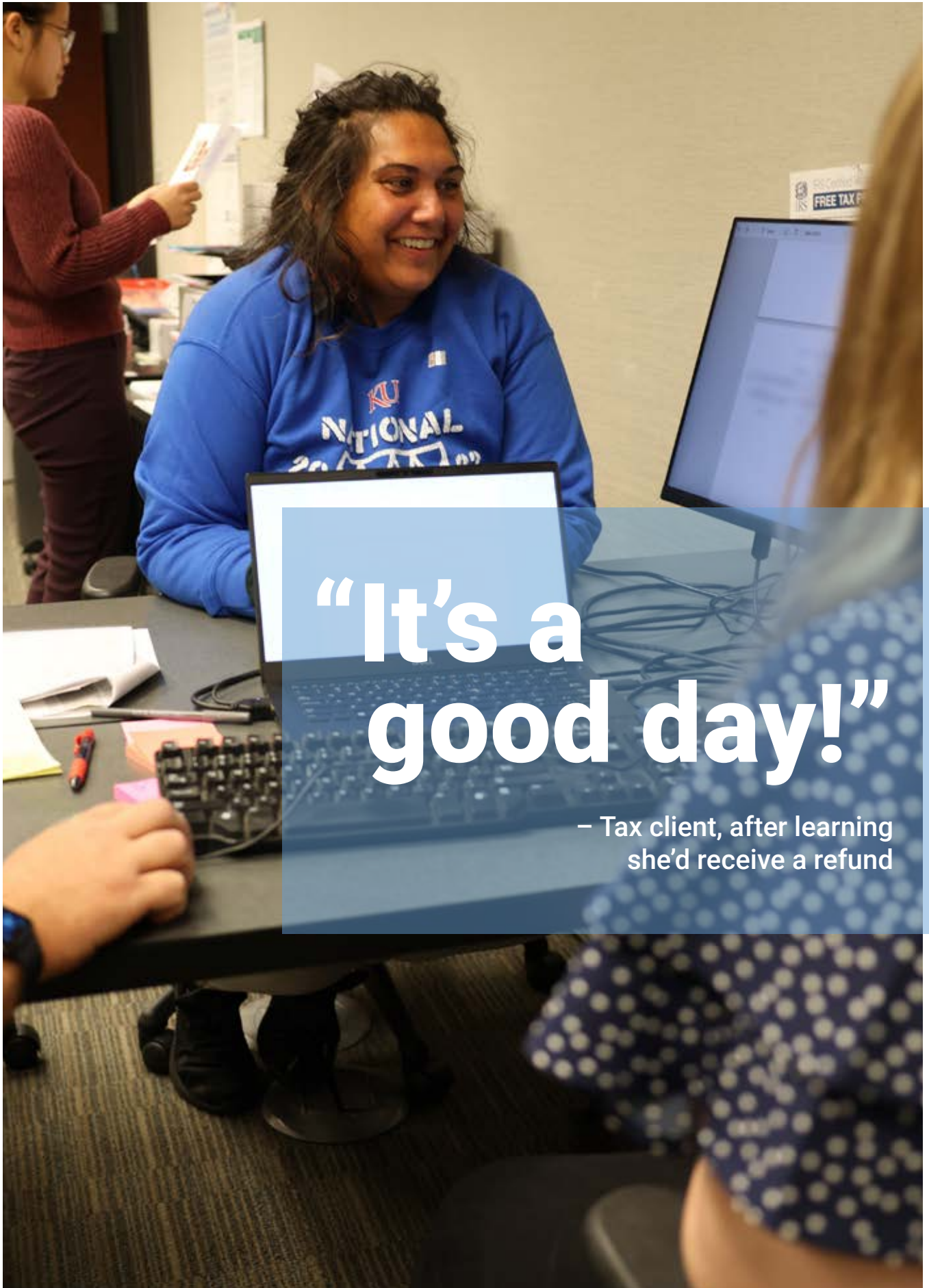
hours saved from GIV's  
reduced budget

**264**

nonprofits shopped at the GIV warehouse

**\$3.04 MILLION**

record breaking value of donated products  
acquired by nonprofits for free



**“It’s a  
good day!”**

– Tax client, after learning  
she’d receive a refund

# Free Tax Prep

**Because of you, United Way invested \$176,334 to help income-limited households access \$7.1 million in tax returns.**

United Way's free tax prep program helps clients file their taxes for free and secure refunds that will help their bottom line and, in turn, boost our local economy.

Grant secured by United Way from the IRS to support the Volunteer Income Tax Assistance program	<b>\$123,608</b>
Percent of households in south central Kansas that qualify by earning less than \$60,000 a year	<b>40%</b>
Free tax prep sites across south central Kansas	<b>13</b>
Volunteers who became IRS-certified tax preparers	<b>115</b>
Tax returns filed	<b>5,894</b>
Average fee to file taxes through a commercial service that clients avoided paying	<b>\$248</b>
Collective value of tax fees saved by clients	<b>\$1.46 MILLION</b>
Average tax refund awarded	<b>\$1,021</b>
Total refunded to our community	<b>\$7.1 MILLION</b>

# Imagination Library

**Because of you, United Way invested \$125,683 to strengthen the literacy skills of over 12,000 children, preparing them for academic success and workforce productivity.**

United Way funds Dolly Parton's Imagination Library to bring high-quality, free books to children under five years old across south central Kansas. Each month, children receive a new, specially selected book in the mail at no charge.

Children across south central Kansas enrolled through United Way	<b>12,074</b>
--	---------------

Books amassed by children, if enrolled at birth	<b>60</b>
---	-----------

Children are read to more often and longer by caregivers	✓
--	---

Children have a more positive attitude about reading and a stronger motivation to read	✓
--	---

Children enter school with more advanced language skills	✓
--	---

Number of books that have been distributed to children across south central Kansas since United Way launched the program locally in 2011	<b>1+ MILLION</b>
--	-------------------



# ion



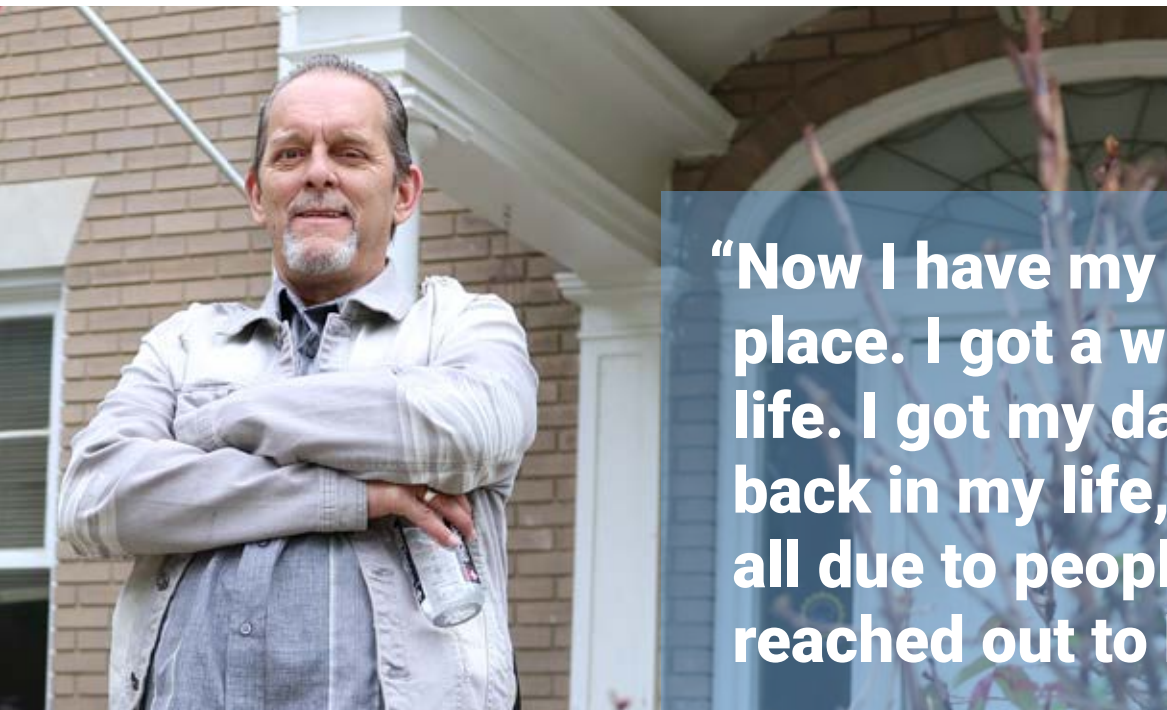
**“Her future is brighter  
because of this program.”**

– Jennifer and Chris Johnson, parents of Evelyn

# Coalition Homeless

**Because of you, United Way invested \$617,846 to secure a \$2.8 million grant to make homelessness rare, brief and non-recurring for all our neighbors in Sedgwick County.**

The Coalition to End Homelessness in Wichita/Sedgwick County, led by United Way, unites community stakeholders in working to achieve functional zero homelessness – when the number of people experiencing homelessness never exceeds our community’s capacity to move people into housing. To achieve this goal, the coalition is identifying and eliminating barriers to housing, coordinating and providing client-directed services, and annually applying for grant funding from the U.S. Department of Housing and Urban Development (HUD).



**“Now I have my own place. I got a wonderful life. I got my daughters back in my life, and it’s all due to people that reached out to help.”**

– Mike, formerly homeless

# to End sness

Persons identified as homeless during the annual Point-in-Time Count, a single, one-day snapshot of homelessness in Sedgwick County  
*Sheltered = 552 Unsheltered = 150*

**702**

Individuals served through emergency shelter, transitional housing, street outreach and housing services throughout the year

**2,157**

Individuals housed or kept in housing

**1,020**

Average number of shelter days per person

**29**

Percent who returned to homelessness within two years

**21%**

Individuals assisted through case conferencing, a weekly, cross-agency meeting to collaborate on ways to remove barriers to housing and services

**590**

Veterans housed as part of Homes for Heroes, a partnership formed in July with the City of Wichita, Robert J. Dole VA Medical Center, Sedgwick County and United Way of the Plains to achieve functional zero homelessness for veterans by the end of 2024

**110**

U.S. Dept. of Housing and Urban Development (HUD) grant, secured by United Way on behalf of the coalition, to fund homeless services

**\$2.8 MILLION**

Coalition members, representing nonprofits, government entities, faith-based organizations and persons with lived experience

**511**

# 211 Resource Navigation

**Because of you, United Way invested \$426,460 to ensure Kansans found the resources they needed to thrive 159,089 times last year.**

Every day, our neighbors across the state grapple with hard questions, like how they will feed their family, pay rent or find affordable healthcare. The 211 Resource Navigation Center confidentially links them to vital programs and services in their community, freeing 911 for emergency needs.



**211 connected Kansans to community resources 159,089 times last year.**

**51,060**

calls to 2-1-1

**103,702**

database sessions at  
211Kansas.org

**3,862**

text sessions to  
898-211

**465**

chat sessions at  
unitedwayplains.org/211

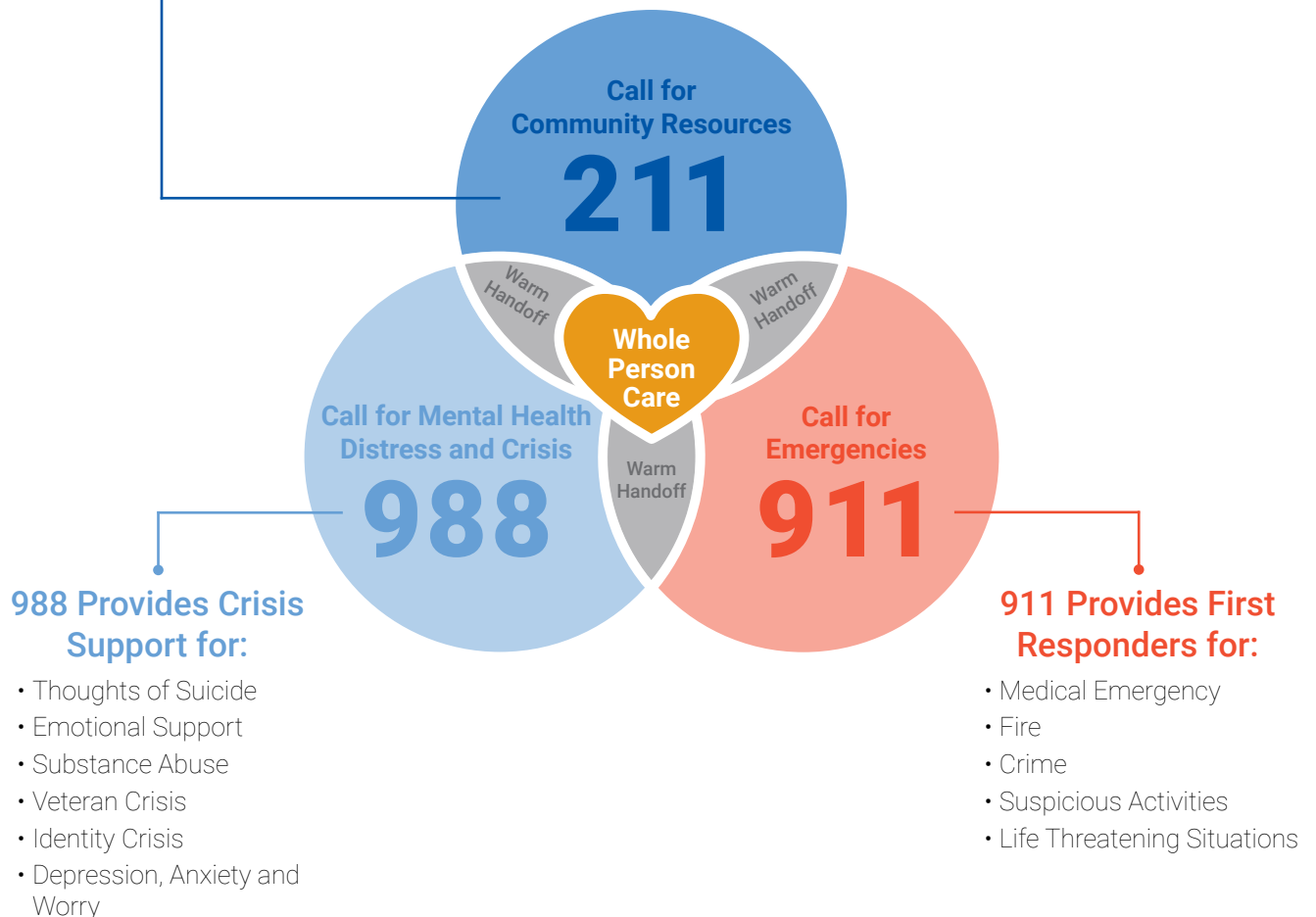


# Resource on Center



211 maintains a comprehensive database of health and human services available across Kansas, complementing 911 and 988 to provide holistic care for our neighbors in need:

- Food
- Housing and Shelter
- Utility & Rent Assistance
- Healthcare
- Employment Services
- Legal Services
- Support Groups
- Disaster Aftercare
- and more



### 988 Provides Crisis Support for:

- Thoughts of Suicide
- Emotional Support
- Substance Abuse
- Veteran Crisis
- Identity Crisis
- Depression, Anxiety and Worry

### 911 Provides First Responders for:

- Medical Emergency
- Fire
- Crime
- Suspicious Activities
- Life Threatening Situations

# Thanks

These generous organizations, supporters and members are the driving force behind the work United Way does to help everyone achieve their potential. With their support, we are transforming lives and changing community conditions for the better.

## BOARD OF DIRECTORS

### Executive Committee

- Craig Anderson, CrossFirst Bank, Chair
- Walt Berry, Berry Companies, Vice Chair
- Sue Tirukonda, Cordell Wealth Management, Treasurer/Finance Chair
- Jodi Noah, Textron Aviation, Immediate Past Chair
- Jennifer Szambecki, Hutton, Collective Impact Chair
- Doug Ledbetter, EY, Resource Development Chair
- Moji Rosson, Meritrust Credit Union, Governance Chair
- Bobby Gandu, Wichita State University, Strategic Planning Chair

### Directors

- Sarah Andrews, Stand Together
- Paul Allen, Allen, Gibbs & Houlik
- Ron Baker, Ascension Via Christi
- Cornell Beard, IAM & AW District Lodge #70
- Brian Burnett, Plumbers and Pipefitters: Local Union #441
- Gene Camarena, La Raza Pizza
- Ebony Clemons, Evergy
- Margaret Dechant, 6 Meridian
- Adam Dunn, Martin K. Eby Construction Co.
- Bradley Dyer, Credit Union of America
- Patricia Hardin, American Postal Workers Union #735
- Rich Kerschen, The Law Company
- Sam Marnick, Spirit AeroSystems

- Donna Lin Niles, Cargill
- Judy Pierce, Wichita-Hutchinson Labor Federation of Central Kansas
- Dr. William Polite Jr., Wichita Public Schools
- Carol Russell, Communication Workers of America #6402
- Gary Schmitt, INTRUST Bank
- Tonya Sudduth, Bombardier
- Dr. Sheree Utash, WSU Tech
- Katie Warren, United Teachers of Wichita
- Johnathan Weigand, J.P. Weigand & Sons
- Lavonta Williams, Community Advocate

### Affinity Group Representation

- MaeLauren Hudson, 6 Meridian
- Amy Schafer, Community Advocate
- Catie Shaffer, Hutton

## MILLION DOLLAR SUPPORTERS

- Spirit AeroSystems
- Textron Aviation

## TOP CAMPAIGNS

- Allen, Gibbs & Houlik
- Ascension Via Christi
- Berry Companies
- Bombardier Learjet
- City of Wichita
- Commerce Bank
- Dillon Stores
- Emprise Bank
- Equity Bank

- Fidelity Bank
- FORVIS
- INTRUST Bank
- Koch Industries
- QuikTrip Corporation - Wichita Division

## PROGRAM SPONSORS

- 6 Meridian
- 63Games
- Bank of America
- Black Hills Energy
- Boyd Gaming
- Cargill Cares
- Cox Communications
- Credit Union of America
- Equity Bank
- Evergy
- EY
- Fidelity Bank
- Gene and Yolanda Camarena
- IMA Financial Group
- Kansas Health Foundation
- Meritrust Credit Union
- Mutual of America
- Wichita Habitat for Humanity

## LABOR PARTNERS

- American Postal Workers Union: Local #735
- Communication Workers of America: Local #6402
- Fraternal Order of Police: Lodge #5
- Graphic Communications Conference / International Brotherhood of Teamsters
- International Alliance of Theatrical Stage Employees: Local #190
- International Association of Fire Fighters: Local #135

- International Association of Machinists & Aerospace Workers: District Lodge #70, District #70 Retirees, Local Lodges – #639, #774, #839, #1989, #2799
- International Brotherhood of Boilermakers
- International Brotherhood of Electrical Workers: Local #271, #304, #661, #1523
- International Brotherhood of Teamsters Union: Local #795
- International Union of Bricklayers and Allied Craftworkers: Local #15 MO/KS
- International Union of Elevator Constructors: Local #12
- International Union of Operating Engineers: Local #101, #119
- International Union of Painters and Allied Trades
- Kansas Association of Public Employees – American Federation of Teachers-Kansas
- Kansas Organization of State Employees
- Laborers International Union of North America: Local #1290
- National Association of Letter Carriers: Branch #201
- Office and Professional Employees International Union: Local #277
- Service Employees International Union: Local #513
- Sheet Metal Workers: Local Union #29
- Society of Professional Engineering Employees in Aerospace/IFPTE: Local #2001
- United Association of Plumbers and Pipefitters: Local Union #441
- United Association Local 669 Road Sprinkler Fitters
- United Food & Commercial Workers District Union: Local #2
- United Steel Workers of America: Local #13417
- United Teachers of Wichita
- Wichita/Hutchinson Labor Federation of Central Kansas, AFL-CIO

## SMALL BUSINESS UNITED MEMBERS

- Alloy Architecture
- Basis Consulting Engineers
- B. Luxe Events
- Chasing Dreams Real Estate
- Cheyenne Lindsey's Hair
- Cohlmia Marketing
- Cordell Wealth Management
- First Responders KS
- Flint Hills Dental Group
- Harris Dream Clean
- Holly Ryherd – Souders & Associates Insurance Services
- J & J Body & Paint
- JFox Mediation and Coaching
- L. G. Pike Construction Co., Inc.
- Mather Professional Services
- MPM Wichita
- Peanut & Co.
- Pileus Technologies
- Planet Hair
- Pumpkin Pants Ranch
- Schooley Mitchell – Rod Holter
- Transworld Business Advisors
- Trevor S Harris DDS P.A.
- Trinity Sales & Rental
- West Chiropractic Clinic
- Wichita Shredding

## TOCQUEVILLE SOCIETY MEMBERS

### Transformational Partners

*Gifts of \$100,000 - \$249,000*

- Helen and Russ Meyer

### Groundbreaking Partners

*Gifts of \$25,000 - \$49,999*

- Rachel and Paul Allen
- Adam Berry
- Marla and Charlie Chandler
- DeVore Foundation
- Hannah and Rich Kerschen
- Philip and Laura Knight
- Liz and Charles Koch
- Judy and Doug Ledbetter
- Jodi and Craig Noah
- Kriya and Terry Shortt

### Accelerating Partners

*Gifts of \$10,000 - \$24,999*

- Sue and Fred Berry
- Susayn Brandes

- Susie and Bill Braun
- Yolanda and Gene Camarena
- Ken Clay
- Marilyn Sue Cressler
- Julie and Steve Dixon
- Tracy and Ron Draper
- Julie and Tom Gentile
- April and Michael Gerber
- Nancy and Donald J. Glenn
- Cozy and Chris Goebel
- Patricia and Dawson Grimsley
- Cheryl and Norvan Harris
- Jenifer and Francis Hitschmann
- Michele C. and Anthony B. Isaac
- Kris and Brian Johnson
- Shawna and Shawn Lancelot
- Sondra M. Langel
- Julia and Matt List
- Cindy and Chuck McSwain
- Janet and Dave Murfin
- Jan and Pete Najera
- Susan and Nick Onofrio
- Kathy and Dave Robertson
- Barbara and David Rolph
- The Darrel and Dee Rolph Family Fund
- Lauren and Jon Rolph
- Andrea and Jim Scarpelli
- Kate and Dan Scheer
- Jaki and Roger Scholfield
- Dottie Shannon
- Katie and Cole Spedale
- Matthew R. Stumpe, MD and Shelly Stumpe
- Kelly and Shawn Sullivan
- Natalie and Sean Tarbell
- Daniel J. Taylor Family Foundation
- Marla and Steve Webb
- Roberta Whetzel
- Ellen and Todd Winter
- I. Wayne Woolsey
- Two Anonymous

*United Way of the Plains makes every effort to accurately acknowledge our donors and supporters. If an error in recognition has occurred, please contact Gwen Kochman, Vice President of Philanthropy, at (316) 267-1321 ext. 4123 or [gkochman@unitedwayplains.org](mailto:gkochman@unitedwayplains.org).*



United Way of the Plains

[unitedwayplains.org](http://unitedwayplains.org)

[@unitedwayplains](https://www.instagram.com/unitedwayplains)



04.2024