

CELEBRATING THE PEOPLE'S UNITED WAY



2021 IMPACT REPORT

United
Way



United Way of the Plains

UNITED WAY IS NOTHING WITHOUT YOU.

Imagine our community without people who offer a helping hand. A kind word. An hour of their time. A portion of their paycheck each and every month to support people they may never meet. It's a bleak prospect.

Our community is full of game changers, hand raisers, problem solvers and moment makers. United Way is harnessing this caring power in our community to advance the common good. We unite the community. We mobilize resources. We create change.

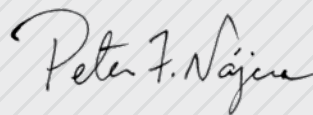
But we couldn't do it without you.

You are the United Way: Volunteers, contributors, nonprofits, corporate partners, government entities, organized labor. Last year, you gave of your time, skills, money and support to help our 750,000 neighbors in south central Kansas 453,729 times.

You made sure children had an equal opportunity to learn. You gave the next generation a pathway out of poverty. You provided access to services so your neighbors could be healthy and strong, mentally and physically. You supported families in crisis, making sure their basic needs were covered.

You helped your neighbors live their best lives possible.

Our 2021 Impact Report is a celebration of the people's United Way. It's a celebration of you. On behalf of the people we serve, thank you for joining us to fight for a stronger community.



Peter F. Najera
President & CEO
United Way of the Plains





DR. SHEREE UTASH, President of WSU Tech and United Way Board Member, **SHELLY PRICHARD**, President and CEO of the Wichita Community Foundation, and **AMY WILLIAMS**, Director of Global Culture and DEI for Spirit AeroSystems, cheer on nonprofit finalists at the first-ever Impact on the Plains event. *Read more about this "Shark Tank"-style social innovation competition on page 8.*

TABLE OF CONTENTS

2	About Us	18	Basic Needs
4	Social Determinants of Health	20	Student Volunteers
6	Responding All Year Round	21	Cowley County
8	Impact on the Plains	22	Board of Directors
10	Community Services	24	In Appreciation
12	Health	26	Labor Partners
14	Education	27	Recognition
16	Financial Stability	28	Financials

United Way of the Plains is a nonprofit and for-impact organization that focuses on health, education, financial stability and basic needs– the building blocks for a good quality of life and a strong community. Our mission is to improve lives by harnessing the caring power of our community to advance the common good in south central Kansas.



JOHN PILLA, retired Senior Vice President at Spirit AeroSystems, and **AMY SCHAFFER**, retired Director of Advertising for Wichita State University and Always United Steering Committee Chair, volunteer at the United Way Give Items of Value Warehouse. *Read more about the impact of this warehouse for nonprofits on page 11.*

ABOUT US

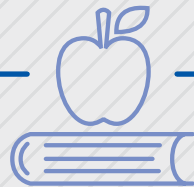
United Way of the Plains is a nonprofit and for-impact organization that focuses on health, education and financial stability – the building blocks for a good quality of life and a strong community. We also strive to provide a social safety net in basic needs so when a crisis occurs, individuals are able to bounce back and remain productive members of our community. Our mission is to improve lives by harnessing the caring power of our community to advance the common good in south central Kansas.

LAST YEAR, WE HELPED THE PEOPLE OF SOUTH CENTRAL KANSAS 453,729 TIMES.



HEALTH

We're fighting to help people thrive, no matter their age, ethnicity or ZIP code. Whether it's increasing access to medical care and mental health services, creating accessible and fun physical activity opportunities, or making nutritious food readily available, we're giving people the tools they need to get healthy and stay healthy.



EDUCATION

We're fighting to improve the odds so every child succeeds. With an approach to education that spans from cradle to career, we're making sure children start school ready to learn, achieve on-grade reading levels, maintain strong attendance and graduate on time.



FINANCIAL STABILITY

We're fighting for people to find not just short term financial success but long-lasting stability. That means connecting people with career skills and support to get and keep a better job. It means providing financial counseling to get out of debt and stay out of debt. It means empowering adults to be self-sufficient.



BASIC NEEDS

We're fighting to help our most vulnerable neighbors and those in crisis recover by meeting their basic needs. This means addressing a lack of resources and overcoming barriers to life-saving assistance. Helping those in need survive today propels them to live their best lives possible tomorrow.

Learn more about United Way of the Plains:
Scan the QR code or visit unitedwayplains.org.



YOUR GIFT GOES FURTHER WITH UNITED WAY

United Way is not simply a pass-through entity. We add value to every dollar donated by serving as policy experts, creating efficiencies, leveraging resources and building relationships across all business sectors to fund causes that drive impact. United Way is fighting for everyone in south central Kansas to live their best lives. We do this by forging unlikely partnerships, generating the best ideas and resources, and implementing new solutions to old problems.

\$1 = \$2.20
DONATION WORTH OF IMPACT

UNITED WAY ADDS VALUE TO EVERY DOLLAR DONATED



GRANTS

Our grant writing generated almost **\$4.2 million** for local initiatives, including literacy, homelessness, financial stability and more.



VOLUNTEER CENTER

Our Volunteer Center coordinated **34,734 hours** of volunteer service in our community, valued at **\$991,294**.



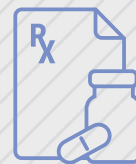
DISTRIBUTED GOODS

Our Give Items of Value program distributed **\$1.19 million** worth of donated products to nonprofits, for free.



TAX REFUNDS

Our work with community partners returned a record breaking **\$7.6 million** in tax refunds to individuals in our community.



PRESCRIPTION SAVINGS

Through a partnership with SingleCare, we helped people save **\$513,560** on their prescriptions last year.

SOCIAL DETERMINANTS

United Way's focus areas of health, education, financial stability and basic needs address local disparities and inequities within the Social Determinants of Health (SDOH) framework so that everyone can reach their human potential.

SDOH are the elements of our environment, beyond personal and physical health outcomes, that impact each person's ability to have a healthy, productive life. According to the U.S. Department of Health and Human Services, factors are grouped into five categories:

- Education Access and Quality
- Health Care Access and Quality
- Neighborhood and Built Environment
- Social and Community Context
- Economic Stability

Direct services provided by United Way are outlined in each category.

- **Operation Immunization** – Access to free flu shots
- **Delta Dental Community Benefit Plan** – Low cost deductible plan for low income individuals that covers diagnostic, preventive, basic and major dental services
- **Kansas Mission of Mercy** – Free community dental clinic
- **SingleCare** – Prescription discount card



Health Care Access & Quality

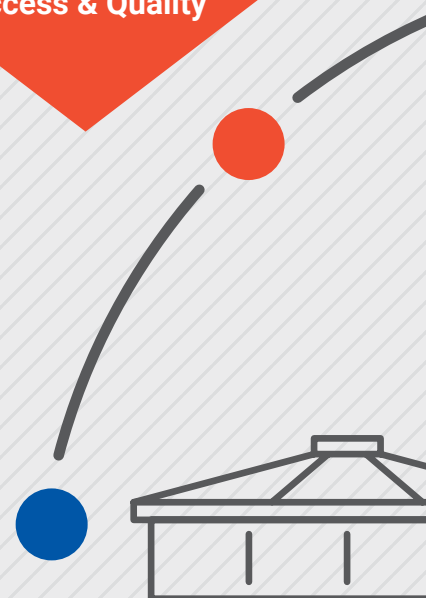
- **Dolly Parton's Imagination Library** – Access to free books for preschool children
- **Read to Succeed** – Tutoring to help students to achieve grade level reading by fourth grade
- **Coaching 4 Literacy** – Access to free books for preschool through third grade students at Shocker Neighborhood schools
- **Early Childhood Block Grant** – Collaborative with community partners to provide direct services to at-risk children and families
- **Endowed scholarships** to support higher education



Education Access & Quality

Education Access & Quality

Literacy
Language
Early Childhood Development
Vocational Training
Higher Education

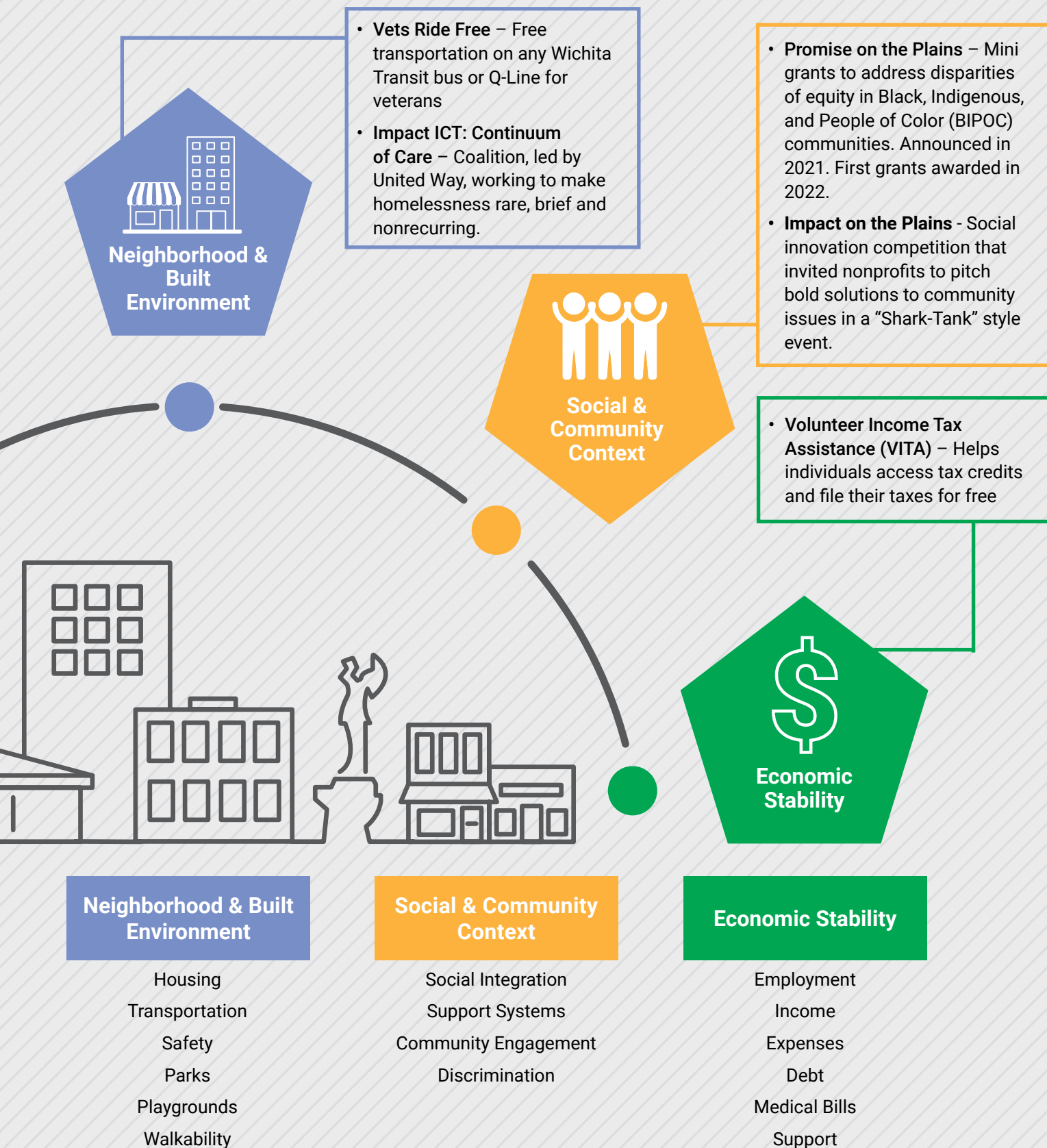


Health Care Access & Quality

Health Coverage
Provider Availability
Quality of Care
Hunger
Access to Healthy Food

¹Healthy People 2030, U.S. Department of Health and Human Services, Office of Disease Prevention and Health Promotion. Retrieved February 2022, from <https://health.gov/healthypeople/objectives-and-data/social-determinants-health>

NTS OF HEALTH



RESPONDING ALL

We're taking action all year long. As needs emerge in the community, we respond with innovative approaches and partnerships to ensure that everyone has the opportunity to reach their potential.



United Way collaborated with America's Mask Challenge to obtain and donate **273,500 WASHABLE FACE MASKS** to Title I schools in Wichita Public Schools. Each child received five masks to help them stay healthy and keep schools open during the height of the pandemic.



United Way presented a donation to **LEAGUE 42** to support their planned tutoring program, which will help student players strengthen their math and reading skills.

JANUARY
2021

STOCKING FOOD PANTRIES

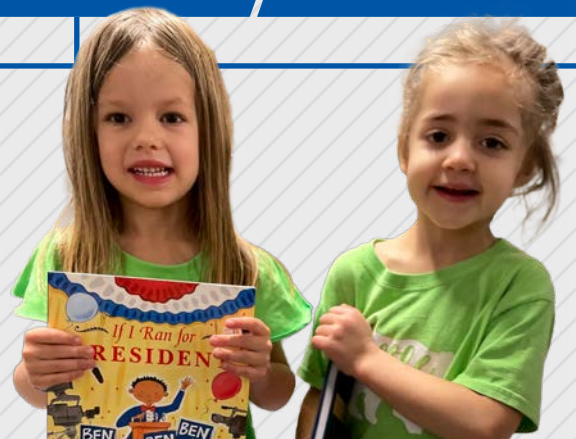
KEEPING KIDS HEALTHY

REPRESENTATION MATTERS

HOMERUN FOR STUDENT SUCCESS



The pandemic increased the need at local food pantries. Thanks to the Wichita Eagle, Dillons and many generous donors, **21 MINI GRANTS** totaling \$40,900 were presented to food pantries in low-income neighborhoods across 15 ZIP codes in Sedgwick, Butler, Cowley, Sumner and Kingman counties to fight food insecurity.



1,162 BOOKS, featuring diverse characters and themes of equity and inclusion, were distributed to 15 local daycare providers. When children see themselves in the books they read, they feel seen and valued in the world. The project was funded through a preschool development grant from the Children's Cabinet and Trust Fund and in collaboration with Wichita Mom.

YEAR-ROUND



The IAM & AW District Lodge #70 field was transformed into a sea of 600 U.S. flags for United Way's **FLAGS OF FREEDOM** event honoring veterans for Memorial Day. Supporters purchased dedications, which ran in a full page ad in the Wichita Eagle. Proceeds supported United Way programs that assist veterans in obtaining transportation, shelter, mental health care and other services.



United Way helped jump start The Salvation Army's **SHARE THE SEASON** campaign with a \$25,000 investment. The initiative provides help and hope to individuals during the holidays who are experiencing a rare financial hardship. This one-time financial assistance helps them weather the crisis and regain stability.

HAPPY, HEALTHY SMILES

HONORING VETERANS

PARTNERING FOR A BRIGHTER FUTURE

SHARE THE SEASON

DECEMBER
2021



United Way supported **KANSAS MISSION OF MERCY**, a free dental clinic, with a financial gift, through in-kind gifts from our Give Items of Value Warehouse, and by organizing volunteers. The event provided \$774,626 in donated dental services to nearly 600 patients.



United Way invested \$55,000 to support the work of **EMPOWER EVERGREEN** to provide the Hispanic community in north Wichita with connections to a continuum of educational opportunities, work-readiness preparation and small business development resources.

IMPACT ON THE PLAINS

Impact on the Plains, our first ever social innovation competition, invited nonprofits to pitch their ideas for bold solutions to community issues in a “Shark-Tank” style event that awarded \$120,000. Seventy-five nonprofits submitted applications with compelling answers to needs in our focus areas of health, education, financial stability and basic needs. A diverse group of community judges narrowed applications to the top two in each area. Finalists pitched their program to a panel of judges at a live event. This event promoted an entrepreneurial ecosystem in the nonprofit community and transformed how complex social issues are addressed.

\$25,000 WINNERS

HEALTH



New Psychiatric Care System for Homeless Adults
Providing psychiatric care for mentally ill adults living in extreme poverty.

EDUCATION



WICHITA STATE UNIVERSITY FOUNDATION

Project Education for All
Teaching 3,000 resettled refugee children in Wichita Public Schools to learn English.

FINANCIAL STABILITY



Fellowship Program
Addressing talent retention/attraction by bringing back home-grown leaders to work in our region.

BASIC NEEDS



Increasing Financial Stability for Domestic Violence Survivors
Addressing the barrier of financial abuse to help survivors achieve independence.



AINS

\$5,000 RUNNERS UP

HEALTH



Unsinkables

Providing second grade students in Derby Public Schools with training to reduce drowning accidents.

EDUCATION



Impactful Science Field Trips for Fourth Graders

Providing students from Title I schools with a unique learning opportunity to reduce pandemic-induced learning loss.

FINANCIAL STABILITY



Core Community

Attacking the issue of poverty by targeting one community at a time.

BASIC NEEDS



El Jardín de los Sueños en Evergreen

This "Garden of Dreams at Evergreen" provides healthy options in a low-income, geographical food desert.

SPECIAL THANKS TO OUR JUDGES AND CORPORATE PARTNERS

EDUCATION

Gene Camarena

La Raza Pizza, Inc.

Jeff Morris

INTRUST Bank

Dr. Alicia Thompson

Wichita Public Schools

FINANCIAL STABILITY

Ebony Clemons-Ajibolade

Evergy

Matt Michaelis

Emprise Bank

John Rolfe

Wichita Regional Chamber of Commerce

HEALTH

Wayne Bell

Federal Executive

Laurie Labarca

Ascension Via Christi

Teresa Miller

Kansas Health Foundation

BASIC NEEDS

Bobby Gandu

Wichita State University

Shelly Prichard

Wichita Community Foundation

Jennifer Szambecki

Hutton



Participants, left to right: Adam Smith, President, **EXPLORATION PLACE**; Mythili Menon, Assistant Professor of English and Linguistics and the Director of Linguistics at Wichita State University, representing **THE CENTER FOR EDUCATIONAL TECHNOLOGIES TO ASSIST REFUGEE LEARNERS** and the **WICHITA STATE UNIVERSITY FOUNDATION**; Joseph Shepard, Director, **LEAD FOR KANSAS**; Mark Kenyon, Community Liaison, **CORE COMMUNITY AUGUSTA**; Rachel Newell, Director of Development, **BREAKTHROUGH EPISCOPAL SOCIAL SERVICES**; Vanessa Buehne, Director of Programs, **DERBY RECREATION COMMISSION**; Kit Lambert, Executive Director, **STEPSTONE**; Anna Lopez, Community Services Representative, **CITY OF WICHITA**.

COMMUNITY SERVICE

To address gaps in services across the social service landscape, we provide community services. These resources are aimed at helping people make connections – to the resources they need when crisis strikes, to volunteer opportunities where they can make a meaningful difference and to free products that help nonprofits keep their overhead low.

2.1.1

122,169 TIMES KANSANS FOUND HELP

United Way **211 INFORMATION AND REFERRAL** connects Kansans to resources in their community to address their needs in times of crisis and uncertainty. Call, text, chat or search online. It's easy to get connected to get help.

TOP FIVE NEEDS REQUESTED LAST YEAR



UTILITY
ASSISTANCE



RENT
ASSISTANCE



FREE TAX
PREP
SERVICES



COVID-19
QUESTIONS



FOOD
PANTRIES

Left: United Way 211
Call Center Coordinator
Heather Pierce



Volunteering is a core value of **YOUNG LEADERS UNITED**. Each fall, they host Serve United, a week dedicated to volunteering throughout the city.

“ I'm happy to volunteer with United Way because I care about my community. I want to be the first in line to make progress and lead the change to improve the lives of Wichitans.

– Cecilia Thibault,
Young Leaders United
Steering Committee Chair

VOLUNTEERING BY THE NUMBERS

The **UNITED WAY VOLUNTEER CENTER** works to match the passions and talents of individuals and groups with the needs of local nonprofits where they can make the biggest difference.

5,568

Volunteers connected to needs at local nonprofits

243

Group projects planned

34,734

Volunteer hours served

188 NONPROFITS OBTAINED \$1.19 MILLION WORTH OF FREE GOODS

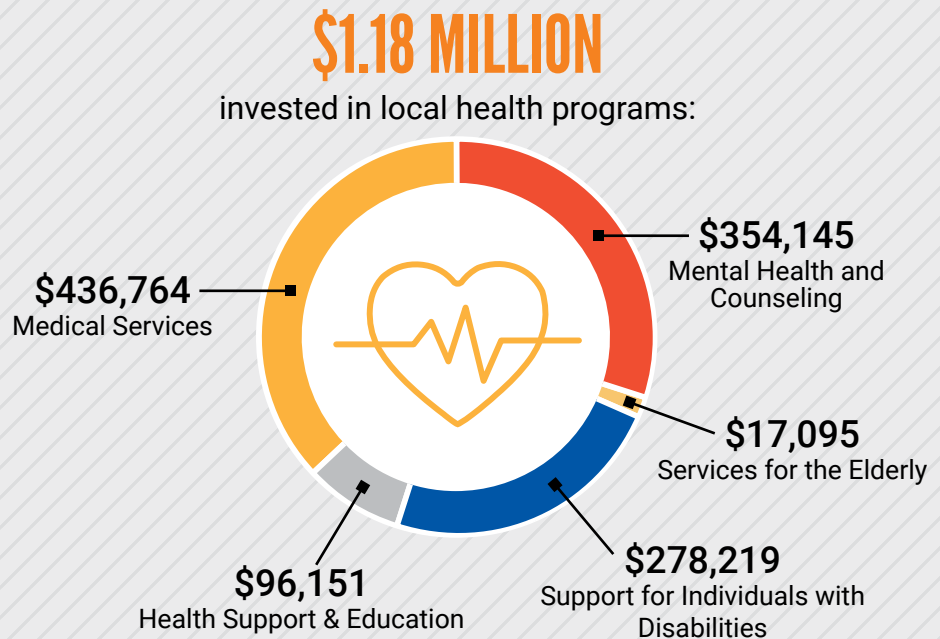
The **UNITED WAY GIVE ITEMS OF VALUE WAREHOUSE** exists to help nonprofits keep their overhead low and meet the tangible needs of their clients. Last year, they accepted gifts in-kind and donated products from 100 companies and made them available to nonprofits at no cost, freeing up more of their financial resources for programming needs.

Nonprofits shopped at the warehouse 888 times.

Right: Maureen Henley from Jehova Jireh shops at the Give Items of Value Warehouse.



Health impacts an individual's ability to live their best life. It's also a factor in the overall strength of our community. We are fighting to help everyone get – and stay – healthy by ensuring all have access to medical services and mental health counseling, that they receive quality care and can gain education for a healthy lifestyle.



FREE FLU SHOTS KEEP OUR COMMUNITY HEALTHY

United Way partnered with the KU School of Pharmacy – Wichita to host free flu shot clinics for those who were unemployed, uninsured or unable to pay. **OPERATION IMMUNIZATION** prevents a burden on the healthcare system, helps individuals avoid lost work time and curbs debt due to medical bills. 1,000 shots were administered at five clinics in traditionally underserved neighborhoods.



41,381 TIMES

United Way helped our neighbors live a healthier life.



\$513,560

was saved on prescription medications by 5,923 people through the **SINGLECARE** prescription discount card program, promoted by United Way.

“Kansans with greater access to dental care reduce their risk of experiencing serious health conditions. Last year, Kansans who lack healthcare access received critical dental care through this program. Good oral health contributes to overall wellbeing, and we’re proud to be able to provide Kansans throughout the state with this important dental coverage.”

– Dean Newton, President and CEO of Delta Dental

\$587,374 WORTH OF FREE DENTAL CARE

was provided to low income individuals through the **DELTA DENTAL COMMUNITY BENEFIT PLAN**. An unhealthy mouth increases the risk of serious health conditions. United Way administers this program to ensure financial barriers are removed for working individuals who lack dental coverage. For a \$5 annual deductible, diagnostic, preventive, basic and major services are covered at 100%.



Learn more about
United Way's work in health:
Scan the QR code or visit
unitedwayplains.org/health

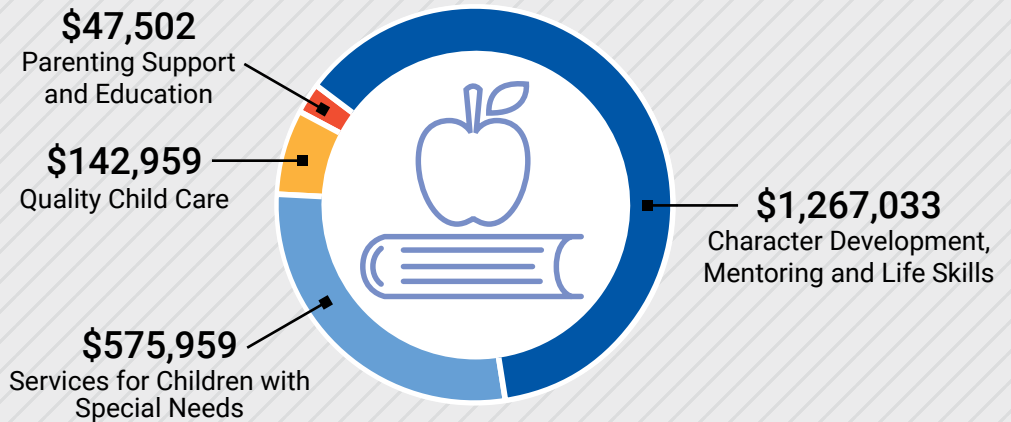


EDUCATION

Education is the foundation to success in life. We're fighting to help every child have the best possible future. With an approach to education that spans from cradle to career, we're making sure children start school ready to learn, achieve on-grade reading levels, maintain strong attendance and graduate on time.

\$2.03 MILLION

invested in local education programs:



137,478 TIMES

United Way helped a child succeed in their education.



112,584 BOOKS

were given to children to encourage them as they learn to read through United Way programs including [DOLLY PARTON'S IMAGINATION LIBRARY](#), the [KANSAS PRESCHOOL DEVELOPMENT GRANT](#) and the [#FIGHT4LITERACY](#) initiative.

357 STUDENTS STRENGTHENED THEIR READING SKILLS

Volunteer reading coaches returned to the classroom after a year off due to COVID-19 to help second and third grade students improve their reading skills through [READ TO SUCCEED](#). Each week, reading coaches listen to students read and help them improve their skills, setting them up for success in school, work and life.



Above: Catie Shaffer, Interior Architect with Hutton and Women United Steering Committee Member, meets with a student at Gardiner Elementary School as part of Read to Succeed.

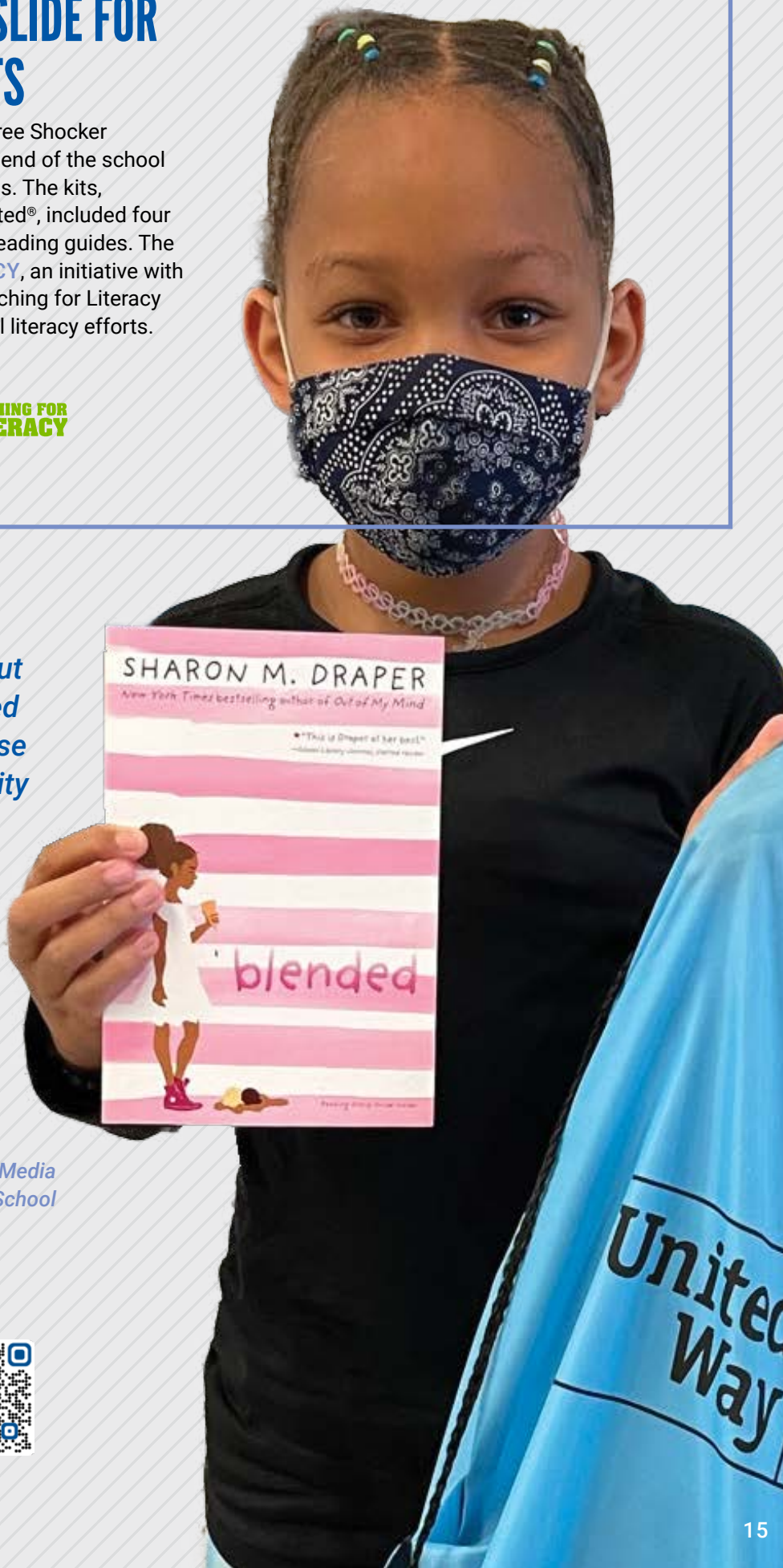
REDUCING SUMMER SLIDE FOR 375 STUDENTS

Literacy kits were given to students at three Shocker neighborhood elementary schools at the end of the school year to help combat summer learning loss. The kits, organized and distributed by Women United®, included four books featuring diverse characters and reading guides. The project was funded by #FIGHT4LITERACY, an initiative with the WSU Men's Basketball team and Coaching for Literacy that raised \$32,145 for United Way's local literacy efforts.



“When I got the email about books coming from United Way, I was excited because it’s a wonderful opportunity for our students to have books to take home during the summer. We have a lot of students who don’t have access to books... They get to take them and keep them. They’re theirs.

– Jenny Stebral, Library Media Specialist, Jackson Elementary School



Learn more about
United Way's work in education:
Scan the QR code or visit
unitedwayplains.org/education

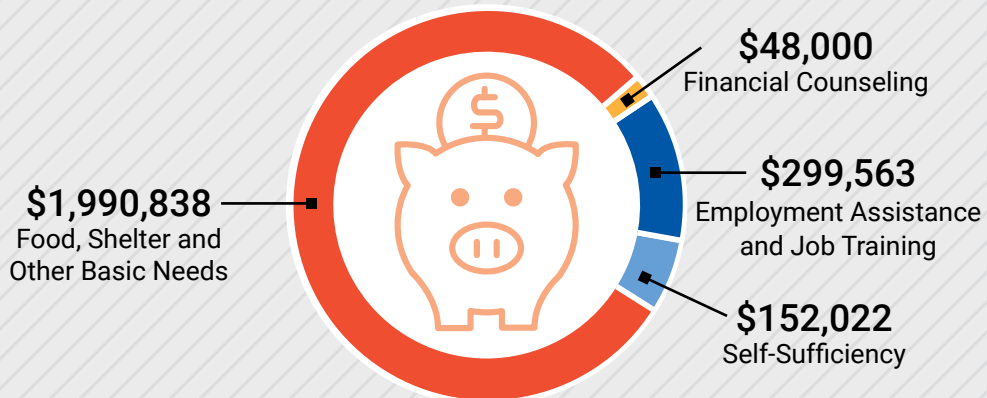


FINANCIAL STABILITY

Financial stability is the ability to efficiently allocate funds, even during challenging times, by utilizing education and accessible resources. We're fighting to put people on a path toward financial empowerment through job training, credit counseling and access to services.

\$2.49 MILLION

invested in local financial stability programs:



VETERANS GIVEN FREE RIDES 40,345 TIMES

Accessing healthcare appointments, grocery shopping, financial institutions and social visits are just a few of the things veterans are able to do through the **VETERANS RIDE FREE** program. The two-year pilot program provides free rides to veterans on any Wichita Transit bus or Q-Line. By removing transportation barriers, veterans are better able to access resources that meet their needs. The program is supported by United Way, the Robert J. Dole VA Medical Center and the City of Wichita Transit.



61,973 TIMES

United Way helped individuals and families gain financial stability.



I started using the free bus rides for veterans about a year ago. It changed my life. Before I walked everywhere. My feet were my only transportation. Now that I can ride the bus for free, I keep my medical appointments and can go anywhere I want without having to bother someone for a ride. I feel independent for the first time in years.

— Josh, Veteran

“When I found myself over my head on a tax return, I called your office...Gina was patient, helpful, and knowledgeable. She found my errors and worked with me until the return was submitted. This was incredibly comforting and far exceeded my hopes and expectations.

— Marsha, VITA client

\$7.6 MILLION RETURNED TO LOCAL TAX PAYERS

Last year, 192 volunteers filed 6,364 tax returns for free for low-to-moderate income households through United Way's Volunteer Income Tax Assistance (VITA) program. The returns equaled a record breaking \$7.6 million. VITA helps individuals and families retain more of their hard earned money by helping to access important tax credits. Refunds are often used by clients to cover the basics, including medical bills, car repairs, housing costs and more, and in turn, boost the local economy. The program is an activity of the Building Economic Stability Together (BEST)

Coalition, founded and supported by United Way, the City of Wichita and the IRS.



Right: Aunita Combs,
VITA Volunteer

Learn more about
United Way's work in
financial stability:
Scan the QR code or visit
[unitedwayplains.org/
financialstability](https://unitedwayplains.org/financialstability)



BASIC NEEDS

We're fighting to help our most vulnerable neighbors and those in crisis recover by meeting their basic needs. This means addressing a lack of resources and overcoming barriers to life-saving assistance. Helping those in need survive today propels them to live their best lives possible tomorrow. In 2021, we introduced this new focus area to address the basic necessities of life.

PRIORITY AREAS



FOOD
INSECURITY



RENT &
MORTGAGE
ASSISTANCE



UTILITY
ASSISTANCE



SAFETY



SHELTER
ASSISTANCE

SUPPORTING AFFORDABLE HOUSING

To help meet the growing need for safe and decent housing, United Way supported [THE STUDIOS AT HUMANKIND](#), a new affordable housing complex, with a gift of \$20,000. The development added 54 new, affordable studio apartments for individuals who need long-term rental assistance. HumanKind also supports tenants with extensive case management to address issues that are often barriers to stable housing, including substance abuse, job placement, access to health care and more. United Way is proud to be a part of the public/private partnership for funding this needed development, including City of Wichita, Sedgwick County, local businesses and individual donors.



Left to right: HumanKind Board Chair Bruce Schriefer, P.B. Hoidale President and United Way Board Chair Steve Dixon, and United Way of the Plains President & CEO Pete Najera.

WORKING TO MAKE HOMELESSNESS RARE, BRIEF AND NONRECURRING

United Way is the backbone organization of **IMPACT ICT - CONTINUUM OF CARE**, a coalition of 170+ people representing nonprofits; faith-based organizations; federal, state and local governments; businesses; and community advocates. Together, the coalition works to resolve homelessness by identifying and addressing barriers to permanent housing, coordinating resources and annually applying for grant funding from the U.S. Department of Housing and Urban Development (HUD).



419

individuals were identified as homeless through the annual point in time count.

(Unsheltered individuals were not counted in 2021 due to COVID-19.)



2,752

individuals were served by IMPACT ICT - CoC members through emergency shelter, transitional housing, street outreach and housing services.



1,128

individuals were housed or kept in housing.



70

Average days of homelessness per person – down a full week since 2020.



\$2.8

million dollar grant from HUD, submitted by United Way of the Plains with the help of the coalition, was renewed to fund 14 vital homeless service programs in Sedgwick County.

NEW HOUSING RESOURCE KEY TO STABLE FUTURES

**Learn more about
United Way's work in
basic needs:**

Scan the QR code or visit
[unitedwayplains.org/
basicneeds](https://unitedwayplains.org/basicneeds)



IMPACT ICT - CoC and United Way 211 Information and Referral partnered with the City of Wichita to implement the **WICHITA EMERGENCY RENTAL ASSISTANCE PROGRAM (WERAP)**. The program provides assistance for households with a financial burden due to COVID-19 that are past due rent and/or utilities and facing eviction. Homeless service providers work with the Wichita Housing Authority to refer clients to the program. In 2021, 787 individuals and households were able to remain in stable housing through WERAP.



NEW \$15,000 GRANT FUNDS YOUTH SERVICE

Wichita was one of only five cities across the nation to receive the \$15,000 grant from **YOUTH SERVICE AMERICA (YSA)**. United Way intern Jadie Chauncey collaborated with other Wichita State University students to apply for the grant as a way to encourage students to engage in community service. The grant empowered local high school students to tackle a community issue. Eleven student-led projects were funded for the spring of 2022.



Left to right: Wichita State University students Ngoc Vuong, Jadie Chauncey and Jordy Mosqueda. Vuong and Mosqueda assisted with the YSA grant as interns with Safe Streets Wichita.



WU'S BIG EVENT XIII



WICHITA STATE UNIVERSITY

Wichita State University **COMMUNITY SERVICE BOARD** partnered with the United Way of the Plains Volunteer Center to organize the WU's Big Event. The event offers students the opportunity to volunteer at a variety of nonprofits across the community. This was the 13th time the event was held.

UNITED WAY SCHOLARSHIP REWARDS STUDENT VOLUNTEERS

Each year, United Way awards the **AARON JOEL SMITH YOUTH MEMORIAL SCHOLARSHIP** to three local seniors who have been active volunteers throughout their high school years. Last year, Megan Miller (right), a senior at Augusta High School, was named the overall recipient for her volunteer work to establish a necessities pantry for fellow students and community members. The pantry, located at the school, offers a variety of hygiene items, basic food and clothing items. Kate Paulsen, a senior from Andover Central High School, and Colby Osner, a senior from Conway Springs, were runners up.



Learn more about United Way's scholarship: Scan the QR code or visit unitedwayplains.org/student-hub



COWLEY COUNTY —

United, we're powering lasting change in Cowley County. With the help of a local advisory committee, we work to identify community needs and develop solutions while fostering relationships with the generous people of Cowley County.

FUNDED PARTNERS

Jan. 1, 2021 – Dec. 31, 2021

Angels in the Attic, Inc. – \$10,000
Big Brothers/Big Sisters – \$5,833
CASA of Cowley County – \$8,333
Eagle Nest – \$6,667
Elevate Cowley County – \$2,917
Family Life Services – \$6,667
Habitat for Humanity of Arkansas City – \$3,958
Winfield Area Habitat for Humanity – \$3,958
Joseph's Storehouse – \$10,000
Winfield Community Helping Hands – \$10,000
Winfield Community Food Pantry – \$6,667



United Way staff deliver comfort kits to the **WINFIELD POLICE DEPARTMENT**. Comfort Kits, assembled by volunteers, include a stuffed animal and children's book. Officers keep the kits with them to console children they encounter in crisis situations.

2021 ADVISORY COMMITTEE

Alice Bendinelli

Associate Professor of English,
Southwestern College
Winfield, KS

Carol Hearne

Retired SVP, Union State Bank
Arkansas City, KS

Mary Jarvis

Retired Social Worker
Winfield, KS

Chris Johnson

Realtor, Berkshire Hathaway
Arkansas City, KS

Joe Langley

Wealth Advisor, RCB Bank
Winfield, KS

Becky Long

Realtor, Albright Realty
Winfield, KS

Ryan Meyer

Senior VP of Marketing and
Procurement, Creekstone Farms
Premium Beef
Winfield, KS

Jesse Morris

SVP/Assistant CFO, Union State Bank
Winfield, KS

Blanche Schmidt

Owner, Schmidt Jewelry
Arkansas City, KS

Aaron Sutton

Injury Prevention/Trauma Outreach,
Wesley Trauma Services
Winfield, KS

Sarah Werner

CEO, Winfield Area Chamber of
Commerce
Winfield, KS

Emilee Wilke

Coordinator, REACH Infant Toddler
Services
Winfield, KS

Karen Zeller

Community Volunteer
Arkansas City, KS

2021 EXECUTIVE COMMITTEE



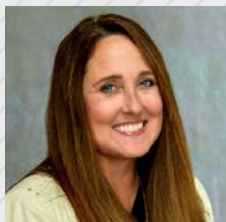
BOARD CHAIR
Steve Dixon
President
P.B. Hoidale Co., Inc.



VICE CHAIR
Jodi Noah
Vice President and Controller
Textron Aviation



TREASURER / FINANCE CHAIR
Adam Dunn
VP & Chief Financial Officer
Martin K. Eby Construction Co., Inc.



IMMEDIATE PAST CHAIR
Ginger Farney
Office Managing Partner – Wichita
Ernst & Young LLP



COLLECTIVE IMPACT CHAIR
Walter Berry
President
Berry Companies, Inc.



GRANT REVIEW CHAIR
Charlie Fox
Former Vice President/ Foodservice Sales
Cargill Wichita



PHILANTHROPY CHAIR
Jackie Gearhart
VP/TM Business Officer
UMB Bank



GOVERNANCE CHAIR
Laurie Labarca
President
Ascension Via Christi



STRATEGIC PLANNING CHAIR
Angel Gomez
AVP of Guest Sales & Services
Royal Caribbean Cruises Ltd.



AT LARGE APPOINTEE
Paul Babich
Former President
United Teachers of Wichita



AT LARGE APPOINTEE
Diane Iseman
Communications Manager
INTRUST Bank



AT LARGE APPOINTEE
Lavonta Williams
Community Advocate

2021 MEMBERS

Paul S. Allen

Chief Executive
Allen, Gibbs & Houlik, L.C.

Craig Anderson

President
Equity Bank

Cornell Beard

President and Directing Business
Representative
IAM & AW District Lodge #70

Wayne Bell

Serving in his personal capacity

Brian Burnett

Business Manager, Financial Secretary-
Treasurer
Plumbers and Pipefitters LU #441

Ebony Clemons-Ajibolade

Sr. Economic Development Manager
Evergry

Gloria Farha Flentje

Attorney

Jordan Ford

President
Whole Life Home Care

Bobby Gandu

Assistant Vice President and Director
of Admissions
Wichita State University

Patricia Hardin

President
American Postal Workers Union #735

Michael Herbert

Former President & CEO
Delta Dental of Kansas

Rich Kerschen

CEO and Chairman of the Board
The Law Company

Frankie Kirkendoll

Community Volunteer

Melissa Knoeber

Executive Vice President, Director of
Culture and Talent
Fidelity Bank

Dr. Kimberly Krull

President
Butler Community College

Doug Ledbetter

Partner
Ernst & Young LLP

Kevin Matthies

Senior Vice President, Quality and
Engineering
Spirit Aerosystems, Inc.

Jesse Morris

Assistant VP, Commercial Lender,
Branch Manager
Union State Bank

Terri Moses

Director of Safety Services
USD 259 - Wichita Public Schools

Judy Pierce

President
Wichita-Hutchinson Labor Federation
of Central Kansas

Carol Russell

President
Communication Workers of America
#6402

Amy Schafer

Former Director of Advertising
Wichita State University

Tonya Sudduth

GM Learjet and
Wichita Site
Bombardier Learjet

Jennifer Szambecki

Marketing Director
Hutton

Dr. Alicia Thompson

Superintendent
USD 259 - Wichita Public Schools

Dr. Sheree Utash

President
WSU Tech

Jeff Weiford

Executive Vice President
GLMV Architecture

Greg Williams

Program Director and Morning Host on
Power 93.5
Audacy

Justine Milmine

Women United Steering Committee
Chair

Cecilia Thibault

Young Leaders United Steering
Committee Chair

Jadie Chauncey

Students United



TOCQUEVILLE SOCIETY

The United Way Tocqueville Society recognizes philanthropic leaders around the globe who have devoted time, talent, and funds to create long-lasting changes by tackling our communities' most serious issues. The society is named after the 19th century French political thinker and historian Alexis de Tocqueville who, in his writings, recognized the importance of voluntary action on behalf of the common good. Below are local members.

LA SOCIÉTÉ NATIONALE

Gifts of \$100,000 - \$249,999

Helen and Russ Meyer

One Anonymous

ORDRE DE FRATERNITÉ

Gifts of \$75,000 - \$99,999

Barbara and David Rolph

ORDRE D'ÉGALITÉ

Gifts of \$50,000 - \$74,999

Ilene Bomhoff

Barbara and Stuart Ray

ORDRE DE LIBERTÉ

Gifts of \$25,000 - \$49,999

Rachel and Paul Allen

Adam Berry

Marla and Charlie Chandler

DeVore Foundation

Ginger Farney and Shawn
Gieger

Sandra and Tom Hammoor

Hannah and Rich Kerschen

Laura and Philip Knight

Liz and Charles Koch

Jodi and Craig Noah

Traci and Bill Pickert

The Darrel and Dee Rolph
Family Fund

Kriya and Terry Shortt

Jay and Debbie Smith

MEMBRES DE LA SOCIÉTÉ

Gifts of \$10,000 - \$24,999

Lori and Tom Aldag

Susie and Craig Anderson

Kim and Greg Anderson

Roxanne and Kevin Arnel

Kate and Clay Bastian

Susayn Brandes

Susie and Bill Braun

Bob Buford

Yolanda and Gene
Camarena

Ken Clay

Marilyn Sue Cressler

Jill Docking (Mrs. Thomas
Docking)

Gloria Farha Flentje and
Jack Focht

Dana M. and J. Larry
Fugate

Julie and Tom Gentile

Nancy and Donald J. Glenn

Patricia and Dawson
Grimsley

Michele C. and B. Anthony
Isaac

Janet Johnson

Sally and Thomas D. Kitch

Monica and Tony Kruse

Shawna and Shawn
Lancelot

Sondra M. Langel

Judy and Doug Ledbetter

Julia and Matt List

Kathy and John Mosley

Janet and Dave Murfin

Jan and Peter Najera

Mary Lynn and Bill Oliver

Susan and Nick Onofrio

Carla and Dan Powers

Mrs. A. Scott Ritchie Sr.

Kathy and Dave Robertson

Ronda and David M.
Rosenberg

Michelle Ruffin-Stein

Andrea and Jim Scarpelli

Kate and Dan Scheer

Jaki and Roger Scholfield

Cole Spedale

Kelly and Shawn Sullivan

Natalie and Sean Tarbell

Betty and Ted A. Vlamis

Beth A. and Sean P.
Weaver

Marla and Steve Webb

Roberta and Alan Whetzel

Ellen and Todd Winter

I. Wayne Woolsey

Lana and David Wyckoff

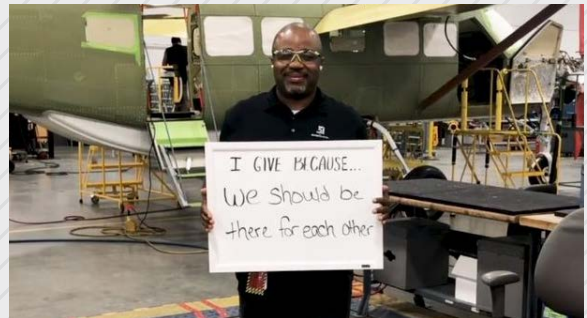
Two Anonymous

TOP CORPORATE CAMPAIGNS

United Way of the Plains is proud to partner with many organizations committed to building a stronger community for all. Our top ten corporate supporters, listed here, donated \$5,791,447 in our 2021 campaign through corporate and employee giving, matching gifts and special events. We are grateful for their support.



Left to right: Spirit AeroSystems Senior Vice President Kevin Matthies, United Way of the Plains President and CEO Pete Najera, Spirit AeroSystems President and Chief Executive Officer Tom Gentile, and Spirit AeroSystems Sr. Manager, Global Community Relations and Corporate Social Responsibility, Molly Edwards.



A Textron Aviation team member shares why he gives to the Uplift Employee Fund to encourage his coworkers to do the same as part of the company's annual workplace campaign.



ORGANIZED LABOR



Organized labor and United Way celebrated 80 years of partnership in 2021. Every year, union members contribute time, skills and money to improve the lives of our neighbors. Together, we are an unstoppable force for good.

American Postal Workers Union: Local #735
Communication Workers of America: Local #6402
Fraternal Order of Police: Lodge #5
Graphic Communications Conference / International Brotherhood of Teamsters
International Alliance of Theatrical Stage Employees: Local #190
International Association of Fire Fighters: Local #135
International Association of Machinists & Aerospace Workers: District Lodge #70, District #70 Retirees, Local Lodges – #639, #774, #839, #1989, #2799
International Brotherhood of Boilermakers
International Brotherhood of Electrical Workers: Local #271, #661, #1523
International Brotherhood of Teamsters Union: Local #795
International Union of Bricklayers and Allied Craftworkers: Local #15 MO/KS
International Union of Elevator Constructors: Local #12
International Union of Operating Engineers: Local #101, #119
International Union of Painters and Allied Trades
Kansas Association of Public Employees – American Federation of Teachers-Kansas
Kansas Organization of State Employees
Laborers International Union of North America: Local #1290
National Association of Letter Carriers: Branch #201
Office and Professional Employees International Union: Local #277
Service Employees International Union: Local #513
Sheet Metal Workers: Local Union #29
Society of Professional Engineering Employees in Aerospace/IFPTE: Local #2001
United Association of Plumbers and Pipefitters: Local Union #441
United Association Local 669 Road Sprinkler Fitters
United Food & Commercial Workers District Union: Local #2
United Steel Workers of America: Local #13417
United Teachers of Wichita #725
Wichita/Hutchinson Labor Federation of Central Kansas, AFL-CIO



IAM & AW Local Lodge #839 Community Services Committee Chair Rickey Nelson (left) presents United Way of the Plains AFL-CIO Community Services Liaison Mario Cervantes (right) a donation for the #Fight4Literacy campaign.

RECOGNITION

For 99 years, United Way has helped the people of south central Kansas live their best lives possible. We are grateful for the recognition we received in 2021 to advance the common good.



United Way of the Plains received the **NONPROFIT CHAMPION AWARD** from the Kansas Nonprofit Chamber for supporting the nonprofit sector with visionary leadership. *Left to right: Angel Gomez, AVP of Guest Sales & Services for Royal Caribbean Cruises Ltd. and United Way Board Member; Pete Najera, President and CEO of United Way; and Steve Dixon, President of P.B. Hoidale Co., Inc. and United Way Board Chair.*

Pete Najera, United Way President and CEO, was named one of **WICHITA BUSINESS JOURNAL'S 2021 EXECUTIVES OF THE YEAR**.

Angie Prather, United Way Vice President of Marketing and Chief Community Engagement Officer, was recognized as one of **WICHITA BUSINESS JOURNAL'S 2021 MARKETING AWARD HONOREES**.



United Way staff and board members gathered to celebrate being named one of the **WICHITA BUSINESS JOURNAL'S 2021 DIVERSITY AND INCLUSION AWARD** honorees. The award recognizes United Way's commitment to continued work in diversity, equity and inclusion.



Women United® Read to Succeed received **STORYTIME VILLAGE'S 2021 LITERACY LEGACY AWARD**, for their lasting impact in the area of literacy. *Justine Milmine (left), Women United Steering Committee Chair and Executive Support with INTRUST Bank, accepts the award from Prisca Barnes (right), Storytime Village Founder.*



These financial statements are unaudited and in abbreviated format. To view our audited financial statements and related footnotes, please contact us at (316) 267-1321.

STATEMENT OF FINANCIAL POSITION

For the fiscal year ending Dec. 31, 2021. Unaudited.

ASSETS

Cash & Investments	\$16,788,861
Receivables, net of allowance for uncollectible pledges	7,299,665
Prepaid expenses, inventory, and other	648,516
Charitable remainder trust	550,929
Property and equipment, net of depreciation	983,917
TOTAL ASSETS	\$26,271,888

LIABILITIES AND NET ASSETS

LIABILITIES

Accounts payable and other accrued liabilities	\$169,948
Payable to agencies	4,189,609
Held as fiscal agent for others	291,141
Deferred grant revenue	1,036,174
Total Liabilities and Deferred Revenue	\$5,686,872

NET ASSETS

Without donor restrictions	9,994,508
With donor restrictions	10,590,508
Total Net Assets	\$20,585,016

TOTAL LIABILITIES AND NET ASSETS **\$26,271,888**



For the sixth consecutive year, United Way of the Plains earned the coveted four-star rating from Charity Navigator.

STATEMENT OF ACTIVITIES

For the fiscal year ending Dec. 31, 2021. Unaudited.

	WITHOUT DONOR RESTRICTIONS	WITH DONOR RESTRICTIONS	TOTAL
REVENUES, GAINS AND OTHER SUPPORT			
Campaign contributions	\$1,571,965	\$8,715,582	\$10,287,547
Donor-designated gifts to agencies and programs	(129,545)	(791,382)	(920,927)
Provision for uncollectible pledges	36,432	(305,045)	(268,613)
Net campaign dollars raised	\$1,478,852	\$7,619,155	\$9,098,007
Other Contributions	121,151		121,151
Investment earnings, interest and unrealized gains/(losses)	1,463,232	193,406	1,656,638
In-kind contributions	1,470,149		1,470,149
Endowment contributions	48,628	550,929	599,557
Grant income	1,677,012		1,677,012
Other revenue	1,146,715		1,146,715
Net assets released from restrictions	8,221,537	(8,221,537)	–
TOTAL REVENUES, GAINS AND OTHER SUPPORT	\$15,627,276	\$141,953	\$15,769,229
EXPENSES			
Program services:			
Agency programs, initiative funding, and other awards	9,609,388		9,609,388
Grant expenditures and direct program services	4,784,520		4,784,520
Total program expenses	14,393,908		\$14,393,908
Fundraising	1,002,478		1,002,478
Supporting Services	1,334,486		1,334,486
TOTAL EXPENSES	\$16,730,872		\$16,730,872
CURRENT YEAR CHANGE IN NET ASSETS	(1,103,596)	141,953	(961,643)
NET ASSETS, BEGINNING OF YEAR	11,098,104	10,448,555	21,546,659
NET ASSET, END OF YEAR	\$9,994,508	\$10,590,508	\$20,585,016

INVESTMENTS BY NONPROFIT

ORGANIZATION	PROGRAM
AbilityPoint	Circle of Friends Youth Education Summer Socialization (YESS)
Andover Community Food Bank	
Angels in the Attic	
Augusta Community Caring Center	
Boy Scouts of America, Quivira Council	Character Development
Boys & Girls Clubs of South Central Kansas	After-School and Summer Program
Bread of Life	
Breakthrough Episcopal Social Services	New psychiatric care system for homeless adults
Cairn Health	Direct Client Services
CASA of Cowley County	
CASA of Sedgwick County	Court Appointed Special Advocates
Catholic Charities	Cana Counseling Services Harbor House St. Anthony Family Shelter
Center for Educational Technologies to Assist Refugee Learners, Wichita State University Foundation	Project Education for All
Center of Hope	Homeless Prevention
Central Plains Health Care Partnership	Project Access
Cerebral Palsy Research Foundation of Kansas	Adult Day Care Program Guided Independent Living Assessment for Young Adults with Disabilities Wheelchair Clinic & Assistive Technology Funding
Child Start	Early Childhood Connections
Clothes Closet and Food Box	
Consumer Credit Counseling Service	Money Matters
Core Community Augusta	Classes to increase economic stability for those in poverty
Dear Neighbor Ministries	
Derby Citizens Recreation Association	Unsinkables program to reduce childhood drownings
Derby Community Food Pantry	

COMMUNITY INVESTMENT	DONOR DESIGNATION	COWLEY COUNTY INVESTMENT	GIV WAREHOUSE	IMPACT ON THE PLAINS	FOOD INSECURITY MINI GRANTS	YOUTH VENTURE GRANTS	TOTAL
22,137	\$4,106		\$2,161				\$89,617
61,213							
					1,900		1,900
		10,000	300		1,900		12,200
					1,900		1,900
72,328	13,184						85,512
248,675	180,944						429,619
					2,000		2,000
			13,425				38,425
				25,000			
279,582	5,000						284,582
		8,333					8,333
60,707	3,466						64,173
45,856	45,083		32,095				383,034
130,000							
130,000							
				25,000			25,000
701,404	12,905						714,309
157,182	7,329						164,511
102,752	21,917		14,742				357,901
43,022							
175,467							
122,515	4,540		55,492				182,548
					1,900		1,900
48,000	557		30				48,587
			750				5,750
				5,000			
	1,000		8,075		2,000		11,075
				5,000			5,000
					1,900		1,900

INVESTMENTS BY NONPROFIT CONTINUED

ORGANIZATION	PROGRAM
Eagle Nest	
Elevate Cowley County	
Exploration Place	Impactful Science Field Trips for Fourth Graders
Family Life Services of Southern Kansas	
Food Pantry of Winfield	
Girl Scouts of Kansas Heartland	Girl Scout Leadership Experience: Youth Development
Giving Center - Lighthouse Community Church	
Gleanings Food Pantry	
Habitat for Humanity of Arkansas City	
Hope Connections of Southwest Butler County	
International Rescue Committee – Kansas	Refugee & Immigrant Students Empowerment
Jehovah Jireh Food and Clothing Center	
Joseph's Storehouse	
Kansas Big Brothers Big Sisters Serving Sedgwick county	Community Based Mentoring
Kansas Big Brothers Big Sisters Serving Cowley County	
Kansas Children's Service League	Healthy Families Sedgwick County Kinship Navigator Outpatient Mental Health
Kansas Foodbank Warehouse	
Kansas School for Effective Learning	English for Speakers of Other Languages (ESOL) GED/High School Diploma Preparation
Kingman Area Ministries Food Bank	
Lead for Kansas	Fellowship program for talent retention in the workforce
Mental Health Association of South Central Kansas	Pathways Senior Companion Program
Mulvane Care & Share	
Our Daily Bread Food Pantry	
Rainbows United	Developmental Assessments and Evaluations Family support services supplies Quality Specialized Child Care 0-5 Years Old Targeted Case Management 0-5 Years Old
Rise Up For Youth	Brotherhood and Sisterhood Programs
Senior Services of Wichita	Meals on Wheels

COMMUNITY INVESTMENT	DONOR DESIGNATION	COWLEY COUNTY INVESTMENT	GIV WAREHOUSE	IMPACT ON THE PLAINS	FOOD INSECURITY MINI GRANTS	YOUTH VENTURE GRANTS	TOTAL
		6,667	25				6,692
		2,917					2,917
	1,000		128				6,128
				5,000			
		6,667					6,667
					1,900		1,900
99,115	663		13,128				112,906
					2,000		2,000
					1,900		1,900
		3,958					3,958
					1,900		1,900
			5,192				5,492
						300	
			21,769		2,000		23,769
		10,000			1,900		11,900
	29,032						171,032
142,000							
		5,833					5,833
	4,341		43,203				218,277
35,330							
47,502							
87,900							
	5,000		237		2,000		7,237
54,060							139,260
85,200							
					1,900		1,900
				25,000			25,000
	17,440		16,297				70,806
19,974							
17,095							
					1,900		1,900
					2,000		2,000
	9,391		16,711				519,811
52,328							
373,281						1,100	
67,000							
	11,482		1,342				220,495
207,671							
	8,618		52,421				217,657
156,619							

INVESTMENTS BY NONPROFIT CONTINUED

ORGANIZATION	PROGRAM
St. Jude Catholic Church	
St. Patrick Catholic Church	
StepStone	Increasing Financial Stability for Domestic Violence Survivors
Sunlight Children's Services	Sunlight Child Advocacy Center
Table of Hope - Metropolitan Community Church	
The Pando Initiative	Core Program The Pando Initiative Check & Connect
The Salvation Army	Basic Needs - Utility Assistance The Salvation Army Homeless Services Emergency Lodge
The Women's Network	Workforce Skills & Support for Disadvantaged Women
Tri-County CASA	Volunteers helping abused and neglected children have safe, permanent homes.
United Methodist Open Door	Community Food Ministry Homeless Resource Center Vision Quest
USD 259 Northwest High School	STEM academy for girls
USD 385 Cottonwood Elementary School	First Lego League
Wichita Area Sexual Assault Center	Mental Health Services for Sexual Assault Victims Public Education Supportive Services for Sexual Assault Victims
Wichita Children's Home	Anti-Human Trafficking Residential Services BRIDGES Transitional Living Program CrossRoads Homeless Emergency Shelter Emergency Foster Care Residential Emergency Shelter Street Outreach Program
Wichita Parks Foundation	Community garden at Evergreen
Winfield Area Habitat for Humanity	
Winfield Community Food Pantry	
Winfield Community Helping Hands	
Workforce Alliance of South Central Kansas	Patient Care Assistant
79 Additional Agencies	
159 Additional Agencies	

TOTALS

COMMUNITY INVESTMENT	DONOR DESIGNATION	COWLEY COUNTY INVESTMENT	GIV WAREHOUSE	IMPACT ON THE PLAINS	FOOD INSECURITY MINI GRANTS	YOUTH VENTURE GRANTS	TOTAL
					2,000		2,000
					2,000		2,000
100,000	3,452			25,000			128,452
20,444	689						21,133
					2,000		2,000
234,744 262,500	17,845		13,145				528,233
120,000 175,000	35,058		18,474				348,532
37,903	359		230				38,492
21,171							21,171
125,815 110,000 56,000	25,090		100,172		2,000		419,077
						1,150	1,150
						6,113	6,113
38,560 9,273 126,525	2,236						176,594
25,000 13,000 8,000 36,000 185,000 5,000	141,634		3,083				416,717
				5,000			5,000
		3,958					3,958
		6,667					6,667
		10,000					10,000
122,400							122,400
	295,779						295,779
			758,517				758,517
\$5,678,250	\$909,142	\$75,000	\$1,191,143	\$120,000	\$40,900	\$8,663	\$8,023,098

SPECIAL PROJECTS & INITIATIVES

INITIATIVE	INVESTMENT
Aaron Joel Smith Memorial Scholarships	\$10,000
Dolly Parton Imagination Library: Early Childhood Reading	226,419
Empower Evergreen: Strategy Development Project	55,000
Fight for Literacy: Promoting 3 rd Grade Reading	20,876
Greater Wichita Partnership: Economic Development	10,000
Humankind Ministries: 316 Hotel Project	10,000
League 42 Foundation: Tutoring Program	10,000
Operation Immunization: Free Flu Vaccines	20,991
Solutions for Homeless Individuals with Pets	2,295
Share the Season: Holiday Assistance Program	25,000
Spirit of Skippy Scholarships	3,250
Veterans Ride Free: Free City of Wichita Bus Rides	10,000
TOTAL	\$403,831

GRANTS ADMINISTERED

GRANT	FUNDING
COVID-19 Emergency Rental Assistance	\$2,072
COVID-19 Hotel Isolation (Homeless Services)	11,850
Delta Dental Community Benefit Program	611,870
Dollar General Literacy Grant	765
Early Childhood Block Grant	740,136
EITC/VITA Tax Services	125,991
HUD Homelessness Grants	402,092
Kansas Children's Cabinet: Preschool Development Grant	13,664
Kansas "Our Tomorrow" Early Childhood Development	5,000
Kansas Volunteer Commission	2,000
Youth Service America	2,024
TOTAL	\$1,917,464

DIRECT SERVICES

PROGRAM	EXPENSE
GIV Warehouse Operations	\$186,072
2-1-1 Information & Referral Service	386,803
Volunteer Center	124,361
Read to Succeed	38,248
Disaster Services	10,514
Community Planning & Resources	523,967
Grant Review	145,270
Labor Liaison & Resources	116,535
TOTAL	\$1,531,770

TOTALS BY INVESTMENT AREA

INVESTMENT AREA	AMOUNT
Community Investment	\$5,678,250
Donor Designation	909,142
Cowley County Investments	75,000
Give Items of Value Warehouse	1,191,143
Impact on the Plains	120,000
Food Insecurity Mini Grants	40,900
Dwane L. Wallace Youth Venture Grant	8,663
Special Projects & Initiatives	403,831
Direct Services	1,531,770
Grants Administered	1,917,464
TOTAL	\$11,856,163





Join United Way to fight for the health, education, financial stability and basic needs of every person in south central Kansas. **SCAN** the QR code. **DONATE ONLINE** at unitedwayplains.org/donate. **MAIL A CHECK**, payable to United Way of the Plains, to 245 N. Water St., Wichita, KS 67202. **TEXT** UWPLAINS to 41444.

UNITED WAY OF THE PLAINS LEADERSHIP TEAM

Left to right: **ABEL FREDERIC**, Vice President of Community Impact; **ANNE CHANDLER**, Vice President of Philanthropy; **PETE NAJERA**, President and CEO; **DARREN MINKS**, Chief Financial Officer; and **ANGIE PRATHER**, Vice President of Marketing and Chief Community Engagement Officer.





United Way of the Plains

OFFICE

245 N. Water St. • Wichita, KS 67202 • (316) 267-1321

FIND HELP OR VOLUNTEER

Dial 2-1-1 • Text your ZIP code to 898-211 • 211Kansas.org

unitedwayplains.org



Release date July 11, 2022.

RENO	HARVEY	BUTLER
KINGMAN	SEDGWICK	
HARPER	SUMNER	COWLEY

*Serving the people of south
central Kansas since 1922.*